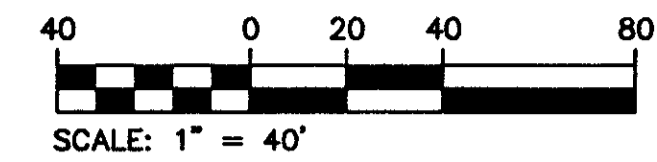


# NORTH OAKS P.U.D.

IN PART OF SECTION 27, TOWNSHIP 46 SOUTH, RANGE 42 EAST  
PALM BEACH COUNTY, FLORIDA  
SHEET NO. 4 OF 5

GEE & JENSON  
ENGINEERS - ARCHITECTS - PLANNERS, INC.  
WEST PALM BEACH, FLORIDA  
NOVEMBER 1996



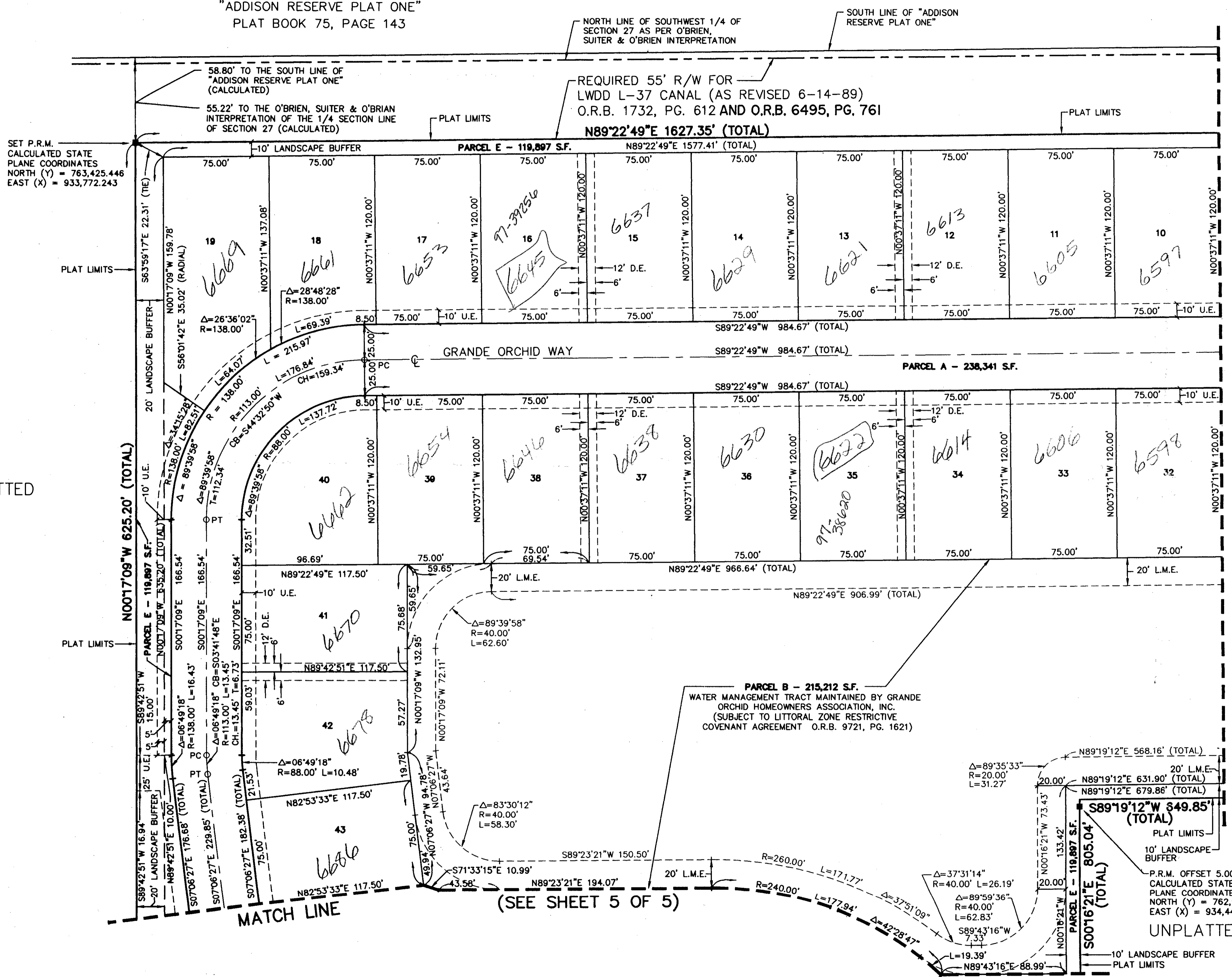
STATE OF FLORIDA  
COUNTY OF PALM BEACH  
This plat was filed for  
record at \_\_\_\_\_ M. this \_\_\_\_\_ day  
of \_\_\_\_\_ 1997, and duly  
recorded in Plat Book No. \_\_\_\_\_  
on Pages \_\_\_\_\_ thru \_\_\_\_\_  
DOROTHY H. WILKEN  
Clerk Circuit Court  
By \_\_\_\_\_ D.C.

"ADDISON RESERVE PLAT ONE"  
PLAT BOOK 75, PAGE 143

NORTH LINE OF SOUTHWEST 1/4 OF  
SECTION 27 AS PER O'BRIEN,  
SUITER & O'BRIEN INTERPRETATION

SOUTH LINE OF "ADDISON  
RESERVE PLAT ONE"

REQUIRED 55' R/W FOR  
LWDD L-37 CANAL (AS REVISED 6-14-89)  
O.R.B. 1732, PG. 612 AND O.R.B. 6495, PG. 761

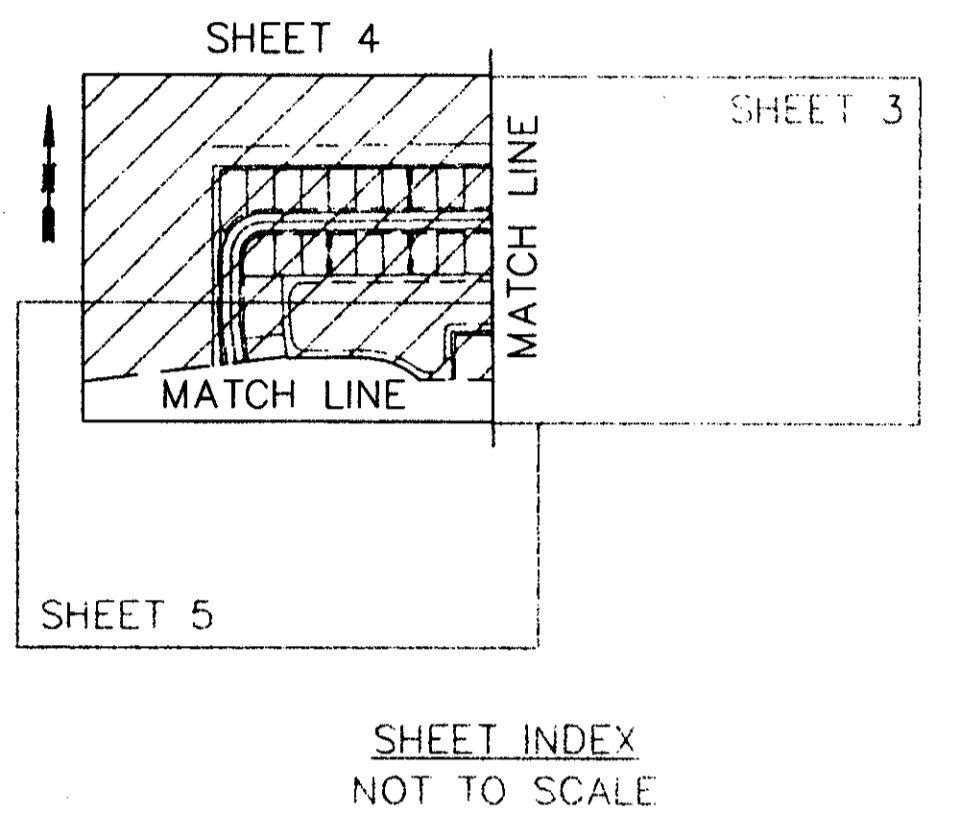


SET P.R.M.  
CALCULATED STATE  
PLANE COORDINATES  
NORTH (Y) = 763,423.446  
EAST (X) = 933,772.243

UNPLATTED

PARCEL B - 215,212 S.F.  
WATER MANAGEMENT TRACT MAINTAINED BY GRANDE  
ORCHID HOMEOWNERS ASSOCIATION, INC.  
(SUBJECT TO LITTORAL ZONE RESTRICTIVE  
COVENANT AGREEMENT O.R.B. 9721, PG. 1621)

PARCEL E - 119,897 S.F.  
S89'19'12"W 649.85'  
(TOTAL)  
PLAT LIMITS  
10' LANDSCAPE  
BUFFER  
UNPLATTED  
P.R.M. OFFSET 5.00' TO SOUTH  
CALCULATED STATE  
PLANE COORDINATES  
NORTH (Y) = 762,956.813  
EAST (X) = 934,444.294



MATCH LINE (SEE SHEET 3 OF 5)

MATCH LINE

(SEE SHEET 5 OF 5)

SUBDIVISION \* NORTH OAKS  
BOOK 80 PAGE 190  
FLOOD MAP # 215A  
QUAD # 37 ZONING PD  
SE - ZIP CODE 33492  
PUD NAME NORTH OAKS

COMPUTED B.C./M.H.  
DRAWN CADD  
CHECKED  
APPROVED  
JOB NO. 96-212

THIS INSTRUMENT PREPARED BY:  
JAMES A. DAVIS, PSM  
FOR GEE & JENSON, ENGINEERS - ARCHITECTS - PLANNERS, INC.  
(FLORIDA CERTIFICATE OF AUTHORIZATION NUMBER LB2934)  
ONE HARVARD CIRCLE  
WEST PALM BEACH, FLORIDA 33409-1923

NOTE: ALL LOT LINES ARE NON-RADIAL UNLESS OTHERWISE NOTED.